



WHEN IT RAINS, IT DRAINS IT ALL HAS TO GO SOMEWHERE

Water from inside our homes goes to a wastewater facility for purification. But water from roofs, streets, and outdoor spigots goes untreated directly into storm drains - straight to our waterways - picking up all kinds of contaminants along the way!



DID YOU KNOW

Excess nutrients, specifically nitrogen and phosphorus, pollute stormwater run-off from urban areas, contributing to **the third greatest cause of lake deterioration** in the US.



DID YOU KNOW

Leaf "litter" and landscape trash account for **56%** of phosphorus in urban stormwater, not to mention clogging storm drains, causing potential flooding and increasing debris in our waterways.



DID YOU KNOW

The amount of phosphorus in grass clippings from mowing your lawn just once can produce up to **100 pounds** of unwanted algae if it ends up in our lakes and ponds.



DID YOU KNOW

Just one pound of fertilizer over-application on the average lawn can equate to **34.2 pounds** of excess algae growth in streams and lakes.



DID YOU KNOW

When you wash your car in the driveway, you're washing about **120 gallons** of grime-filled water downstream.

The soap, together with the dirt, grease, and grime flows untreated into nearby storm drains that run into lakes and streams.



DID YOU KNOW

If dog owners don't clean up after their pooches, **390 million pounds** of poop can wash into our waterways every year in just Colorado! Dog waste contains 10% phosphates and 2% nitrates, contributing to algae growth.

WHY IT MATTERS

Too many nutrients in streams and lakes cause rapid growth of algae.

Algae looks bad, smells bad, degrades water quality and can be harmful to your health.

As algae decays, it uses up oxygen in the water, leading to a decline in our drinking water quality - making it more expensive to treat.

WHAT YOU CAN DO

Dispose Properly



- Compost or bag your leaves and lawn clippings
- Don't blow leaves or lawn clippings into the street
- Sweep up any spills or overspray of fertilizers on sidewalks or streets

Fertilize Efficiently



- Always follow the manufacturer's application recommendations. More isn't better!
- Fertilizing in early fall promotes healthy root systems - leading to stronger, more resilient lawns and plants

Be Car Smart



- Use a commercial car wash where water is recycled and sent to treatment facilities
- Wash your car on the lawn or gravel
- Dump your soapy bucket in the sink

Pick It Up & Pitch It



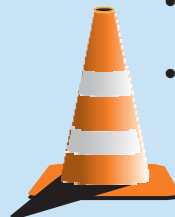
- Clean up dog waste and dispose of it properly
- Pet waste bags are available in most city parks

For Businesses



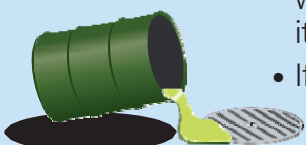
- Do your part at work to prevent stormwater pollution
- Perform necessary maintenance to ensure stormwater ponds and drainage control structures stay clear of litter and excessive sediment buildup
- Properly dispose of chemicals and grease

For Contractors



- Special stormwater permits are required for most construction sites
- Report excessive dust or mud track out from construction sites

Illegal Dumping



- Do not dump chemicals or other waste materials into storm drains — it's illegal
- If you see it, report it

Reporting



- Contact Regional Water at 281.897.9100 or at www.RegionalWater.net